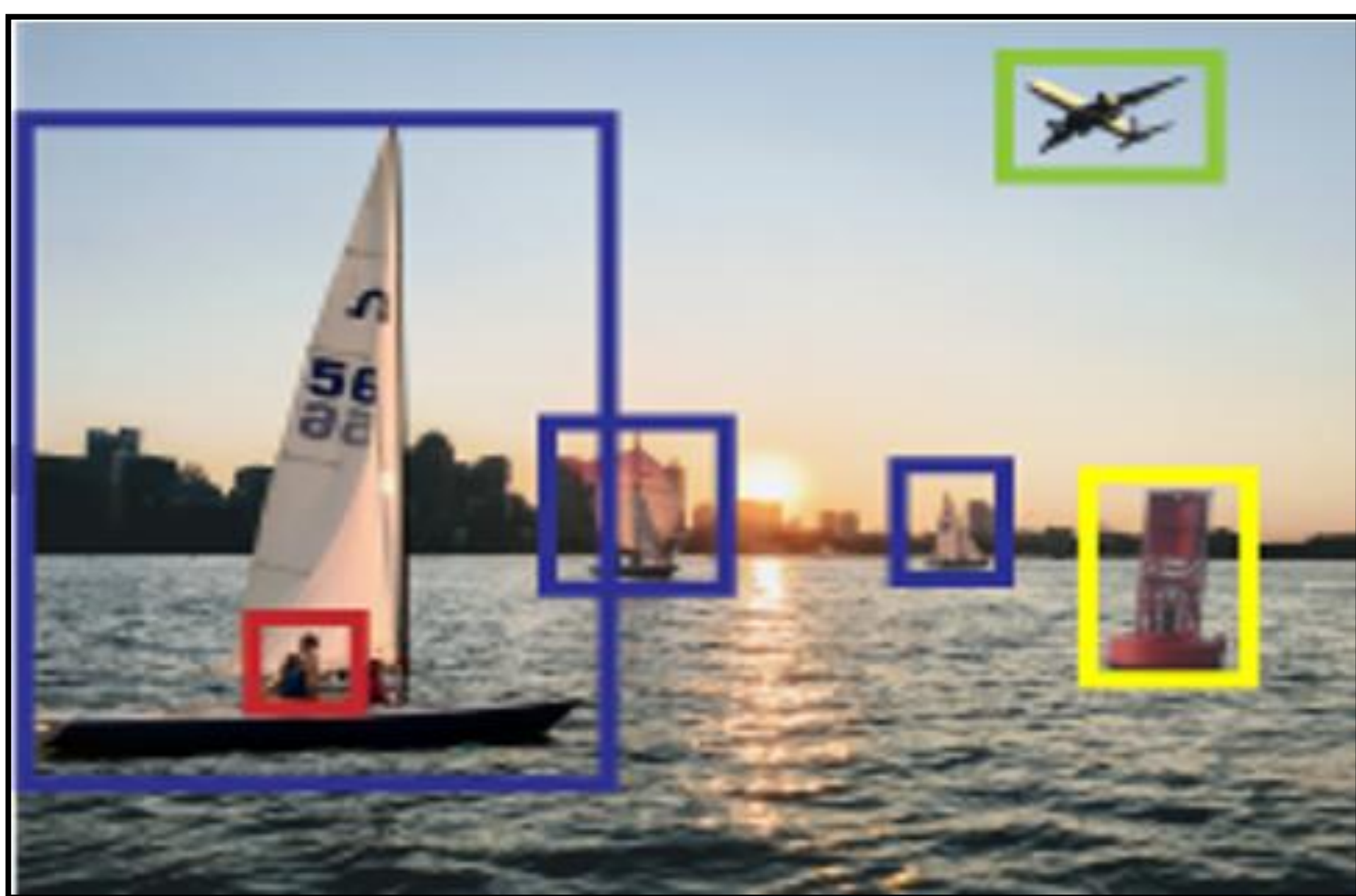
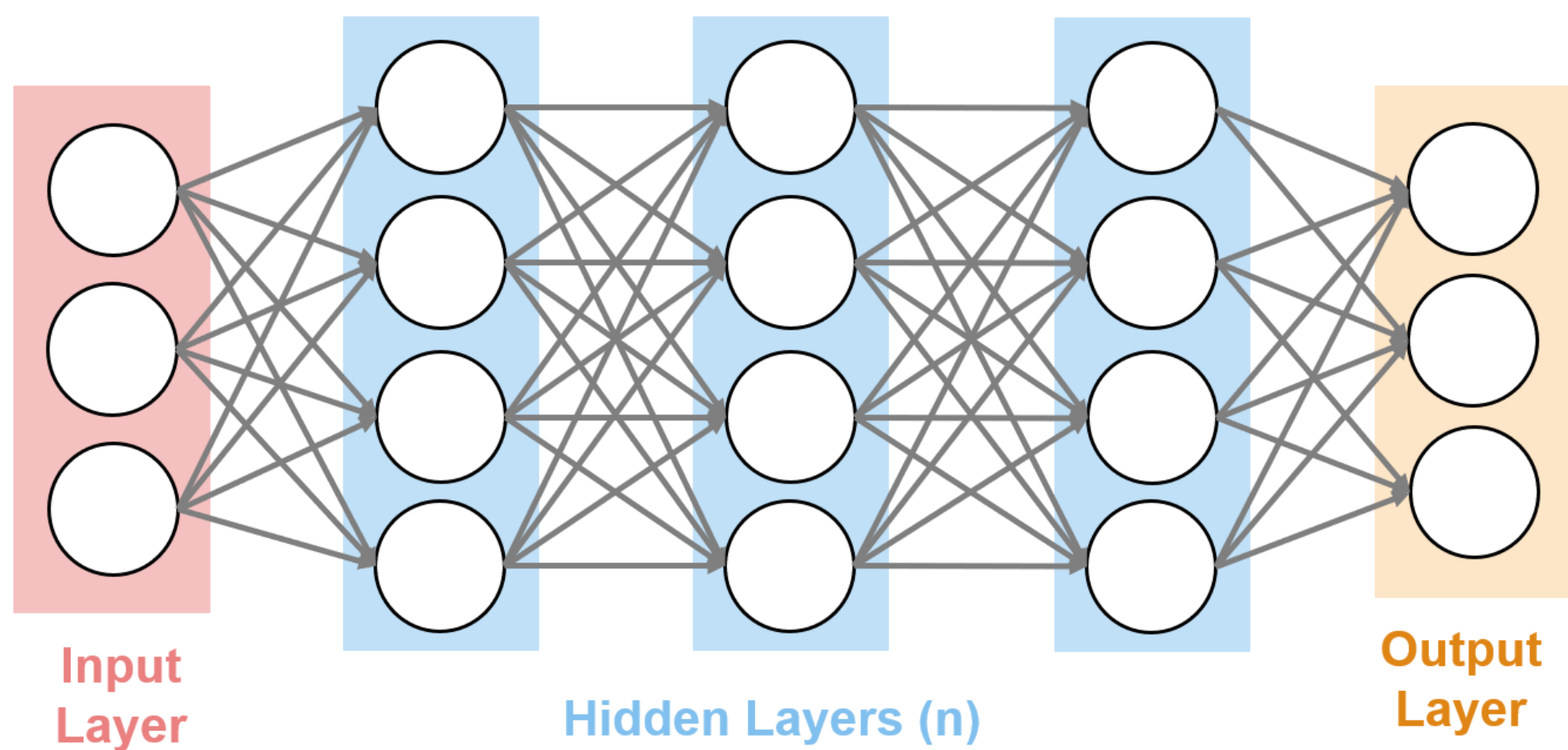


# MATLAB<sup>®</sup> & SIMULINK<sup>®</sup>



## Deep learning: Development to Deployment @ IISc

Registration:



In this interactive session, a **MathWorks engineer will introduce you to**

1. Labelling automation, Human-in-loop labelling
2. Interoperability with various frameworks
3. Automatic code generation for specific targets
4. Hyperparameter tuning and training of DNNs
5. Scaling computations across from desktop to cloud and clusters

**27<sup>th</sup> February 2020 at SERC Auditorium**

**9 AM – 12:30 PM**

**Duration : 3 hrs, 30 mins**

Download and Install MATLAB Campus License from this URL:

**<http://tiny.cc/IISC>**

**Registration: <http://tiny.cc/IISCMATLAB>**