



Supercomputer Education and Research Center

Indian Institute of Science

Maple Installation Guide

For Linux End Users

Procedure for obtaining Maple installer files:

- Open terminal and type `sudo apt update`.
- Type “`sudo apt install filezilla -y`” and hit enter. This will install the Filezilla software.
- Open Filezilla once it is installed successfully.
- Enter these details in the top bar and click on quickconnect.
 - Host: 10.16.4.96
 - Username: guest
 - Password: guest
 - Port: 22
- Click on OK in the "Unknown Host Key" window.
- Once connection is successful type `/share` and hit enter in Remote site address bar on the right side of the screen.
- This will display all software folders available. Right click on the `maple2023.2` and click download. The default download location is your home directory. You may also navigate to your desired download directory on the left pane and drag and drop the folder/file.

Maple Linux Installation:

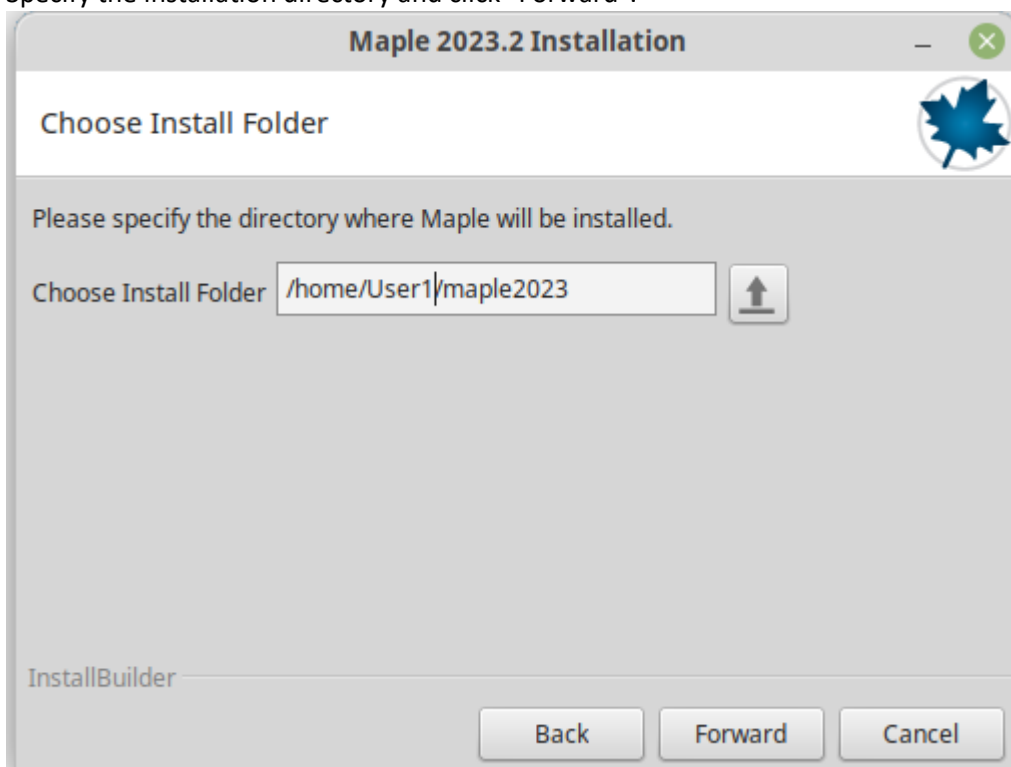
- Open the installation file and click "Forward".



- Accept the license agreement and click "Forward".



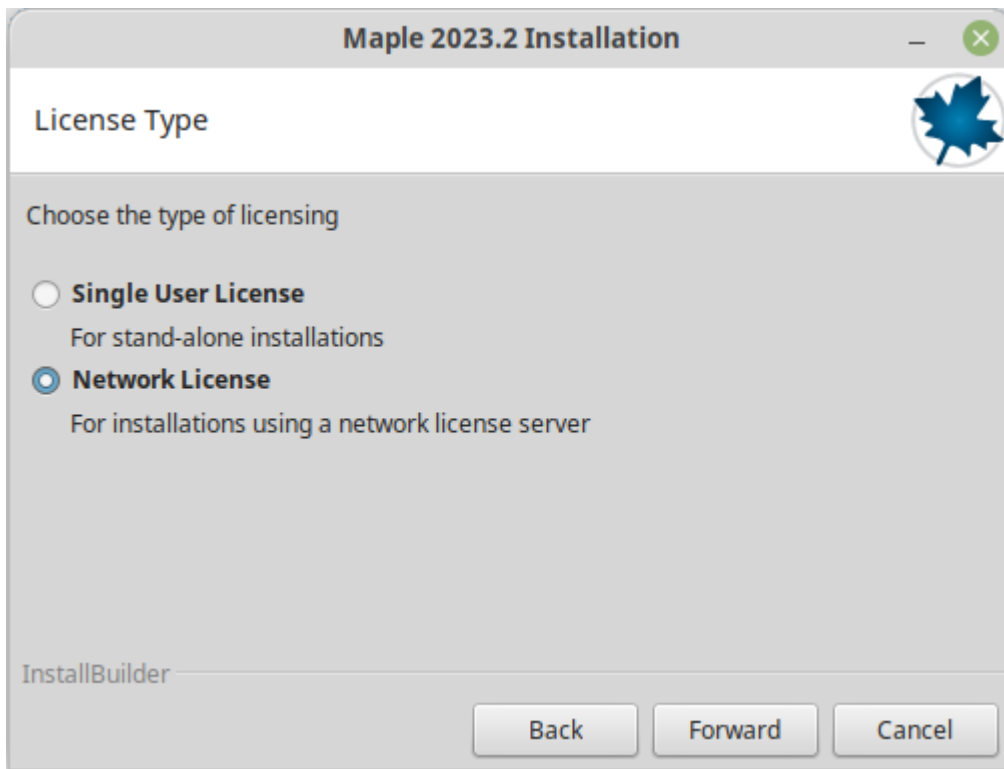
- Specify the installation directory and click "Forward".



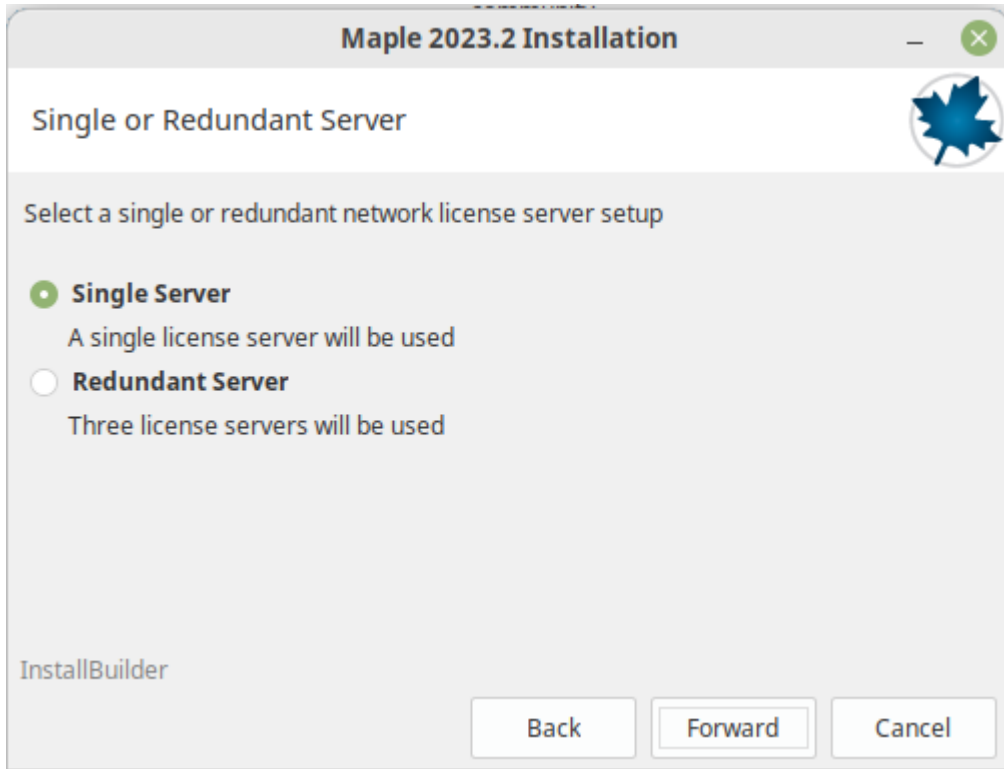
- If you have Matlab already installed and you wish to link it with Maple click the checkbox and specify the path to the Matlab root directory. Then click "Forward". If you do not wish to link Matlab leave the checkbox unchecked.



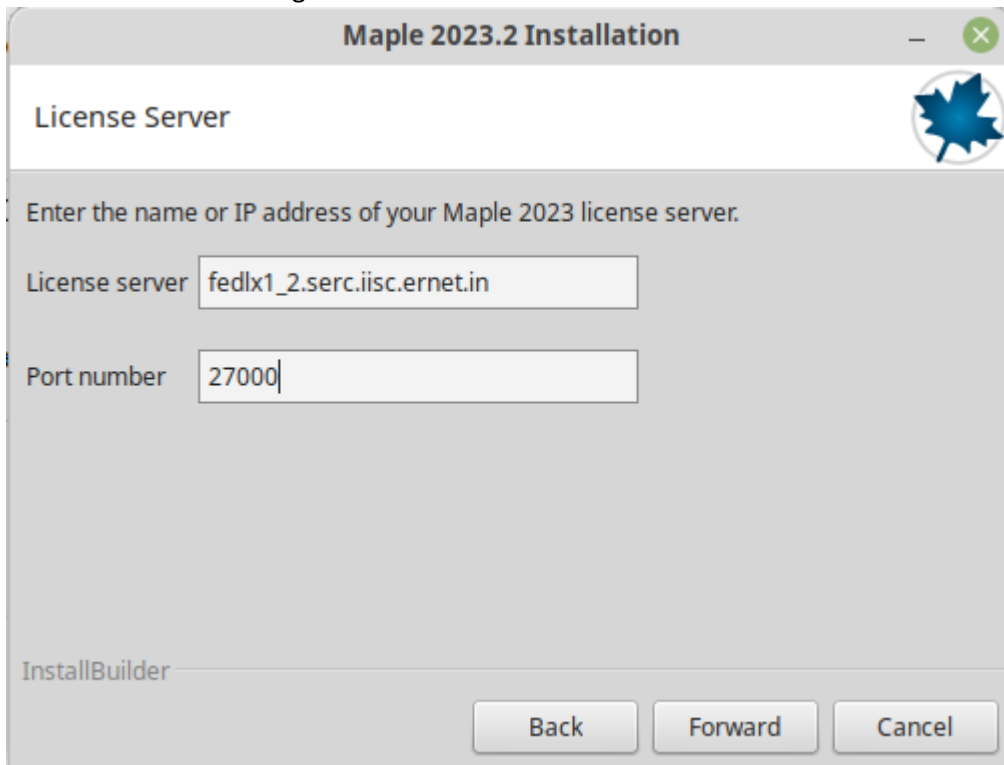
- Select "Network License" and click "Forward".



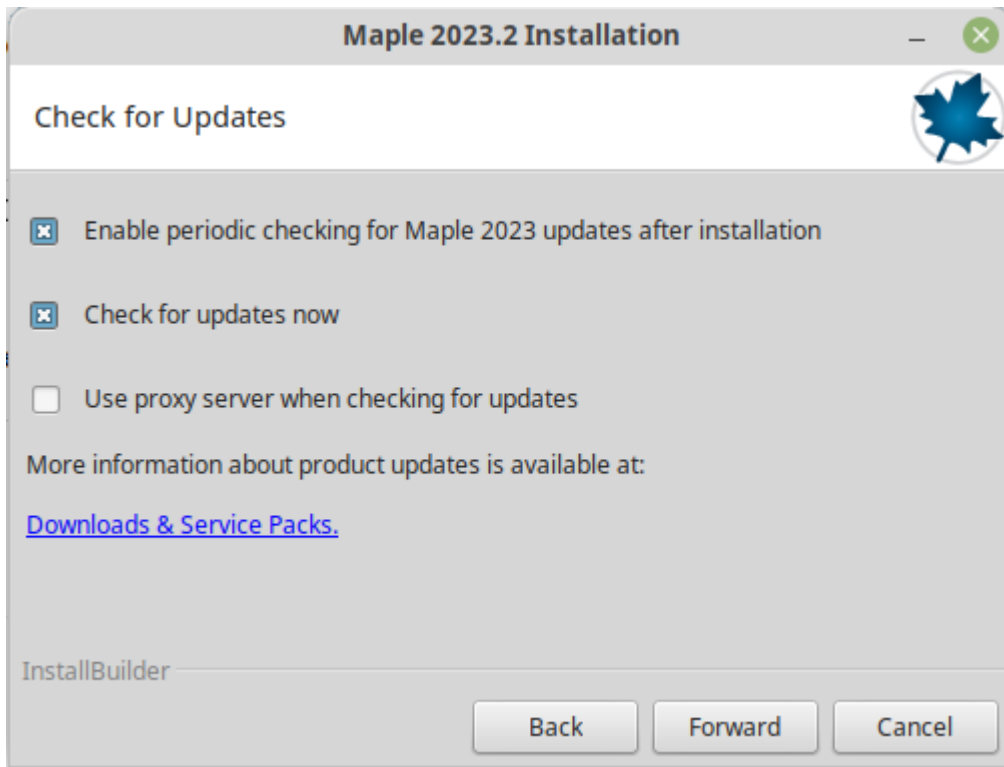
- Select "Single Server" and click "Forward".



- Enter the following in License Server field and click "Next": **fedlx1_2.serc.iisc.ernet.in** or **10.16.4.90**. Do not change the Port Number.



- Keep "Use proxy server ..." checkbox **unchecked** and click "Forward".



- Review details and click "Forward". The installation will start.

