

# The IISc Campus Network & Services

H.Krishnamurthy,  
Gopi Krishna S Garge  
S E R C

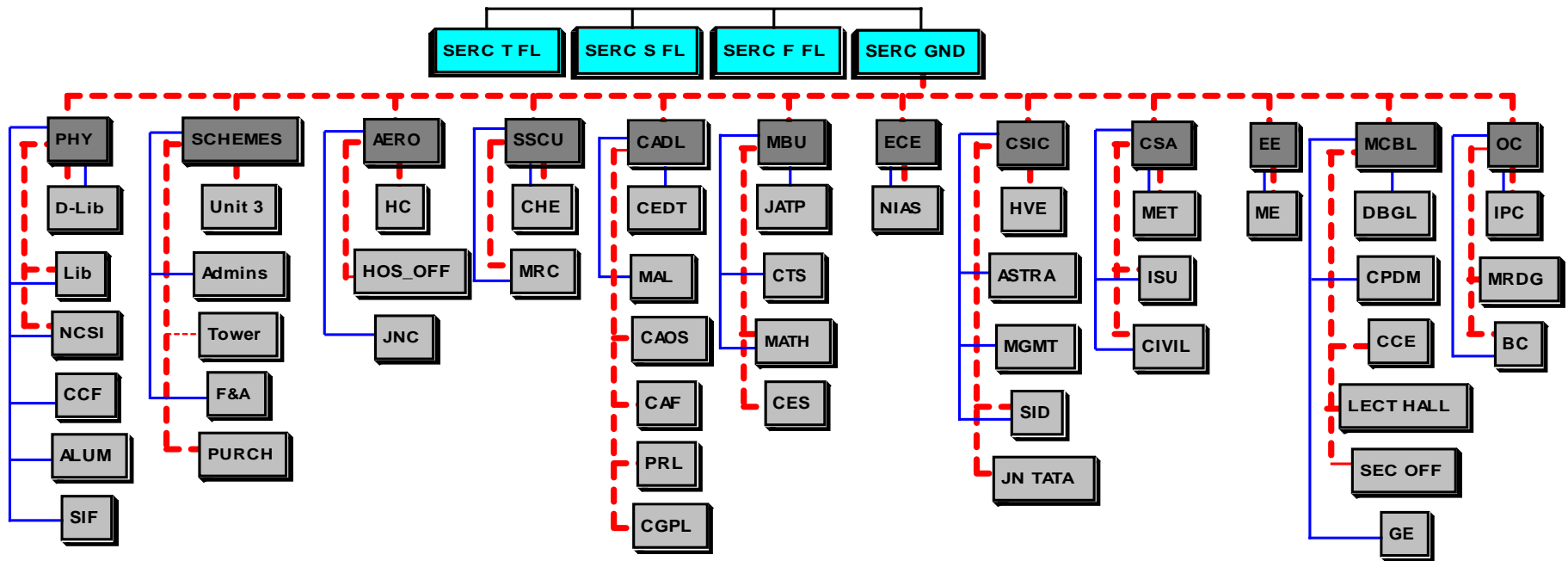
# Agenda

- Campus network structure
- Services
- Network Usage
- Questions

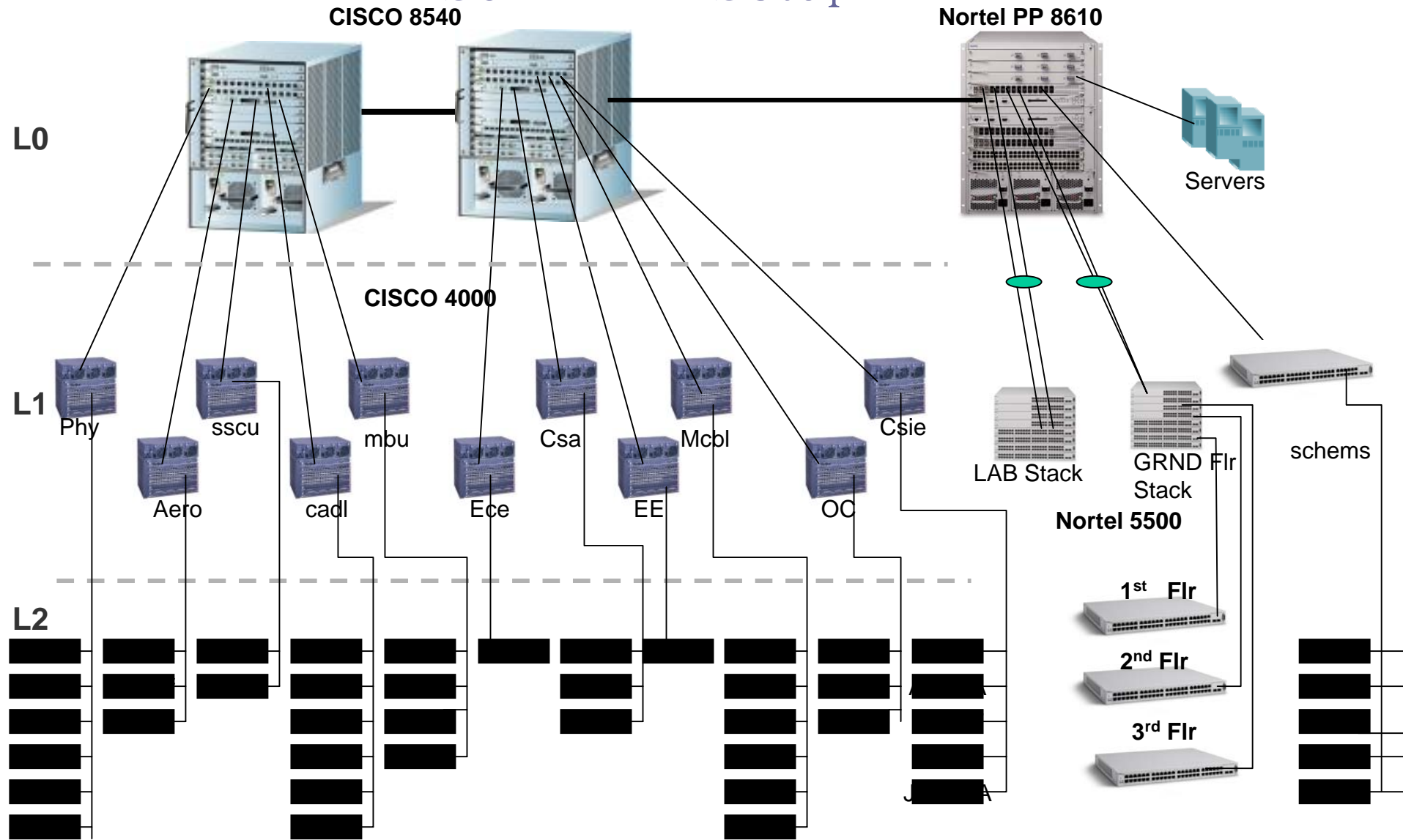
# Campus Network Structure

- Tree Topology
  - Levels 1, 2, 3, etc.
- Single mode fibre
- Gigabit Ethernet
- IP Addressing
  - Private IP addresses
  - Addressing adapts to topology
- Host/resource naming (FQDN)

# Fiber connectivity details



# IISc LAN - Setup



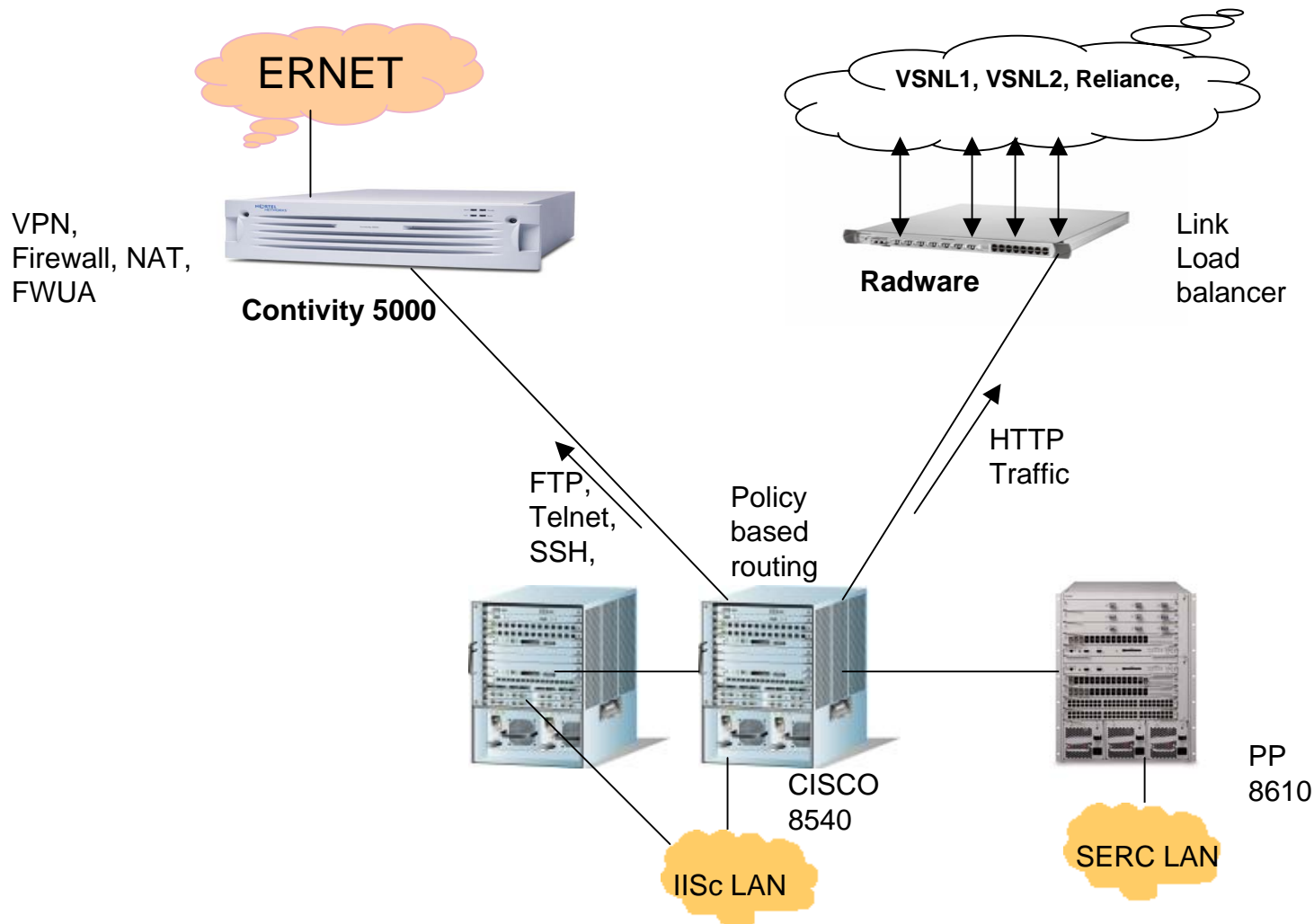
# What's in your department ?

- One managed Ethernet switch on the campus network
- Cabling and devices within the department belong to the department/labs
- Department/lab web servers
- Department mail servers
- Other internal services

# Internet Access

- Campus connects to three providers – ERNET, VSNL, Reliance
- Aggregate bandwidth of 20 Mbps
- All links are fully utilized
- A *bandwidth manager* manages the aggregate bandwidth
- Internet Services – DNS, email, web browsing

# IISc WAN - Links





# Internet Resources

- Domain Naming Services (DNS)
  - Resolve a FQDN to an IP address
- External DNS
  - Resolve names in domains outside campus
- Internal DNS
  - Resolve names in domains within campus
- Register your hosts in IDNS
- Use only FQDN to access resources

# Internet Resources

- Distributed email services
  - Each department has its own mail server
  - Incoming email
    - Via a central server at ERNET
    - Filtered for virus and spam
  - Outgoing email
    - Direct from departments
    - Some departments send through the ERNET server
- Your email account is on your department server (**yourid@yourdept.iisc.ernet.in**)

# Web Services

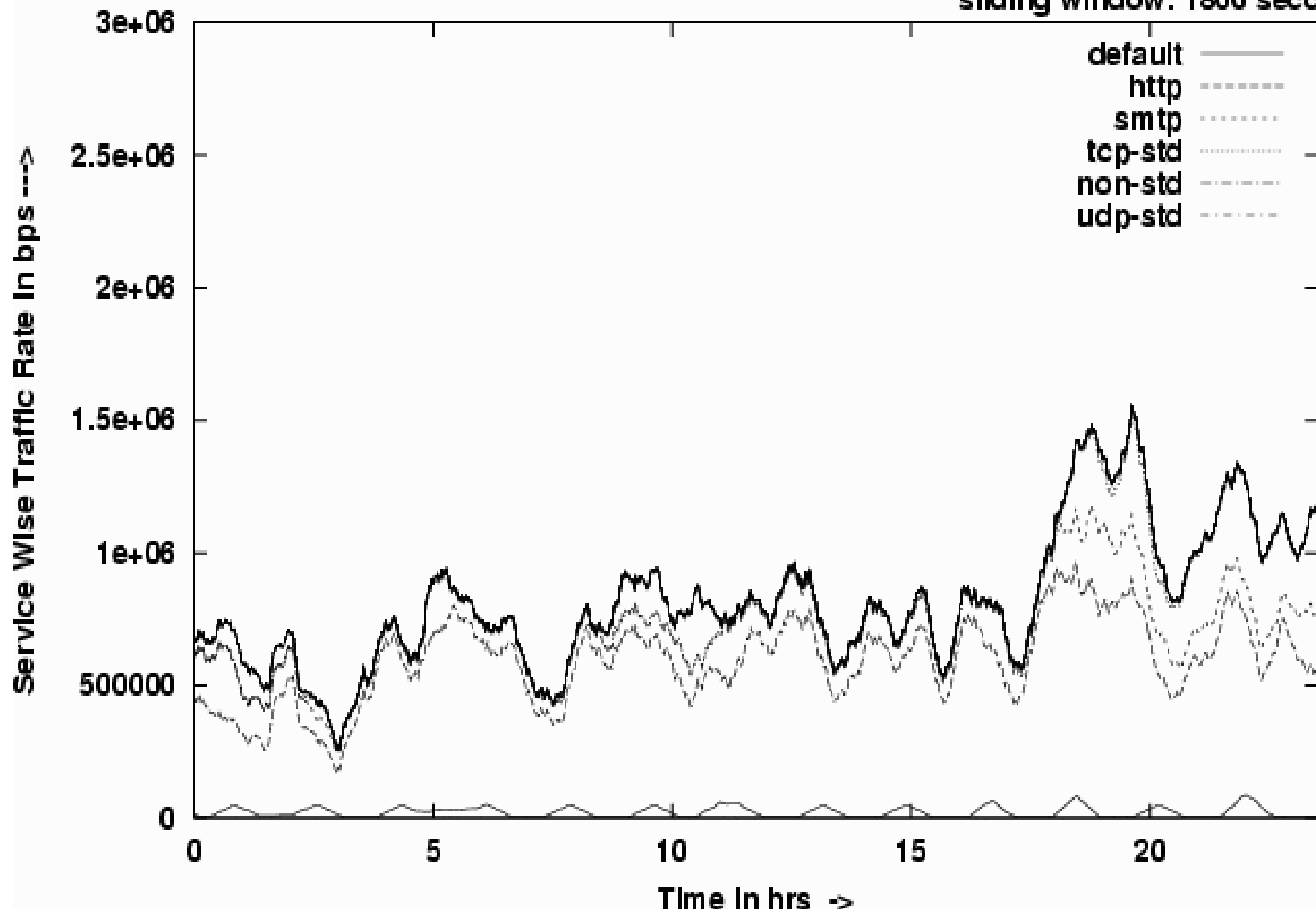
- Access to web based services is via a WWW proxy –  
`iiscproxy1.serc.iisc.ernet.in`, port 3128
- Campus web server – [www.iisc.ernet.in](http://www.iisc.ernet.in)
- Department web servers host local information
- Your content is hosted on the department server

# WWW access

- Generic WWW access
- Access to e-journals
  - Both Engineering and Science journals
  - Subscribed service accessible only through proxies
- More information –  
[www.ncsi.iisc.ernet.in](http://www.ncsi.iisc.ernet.in)

# Outbound Traffic From Ilsc-net

start: 20060820 00:00:00  
stop : 20060820 23:59:00  
sliding window: 1800 seconds



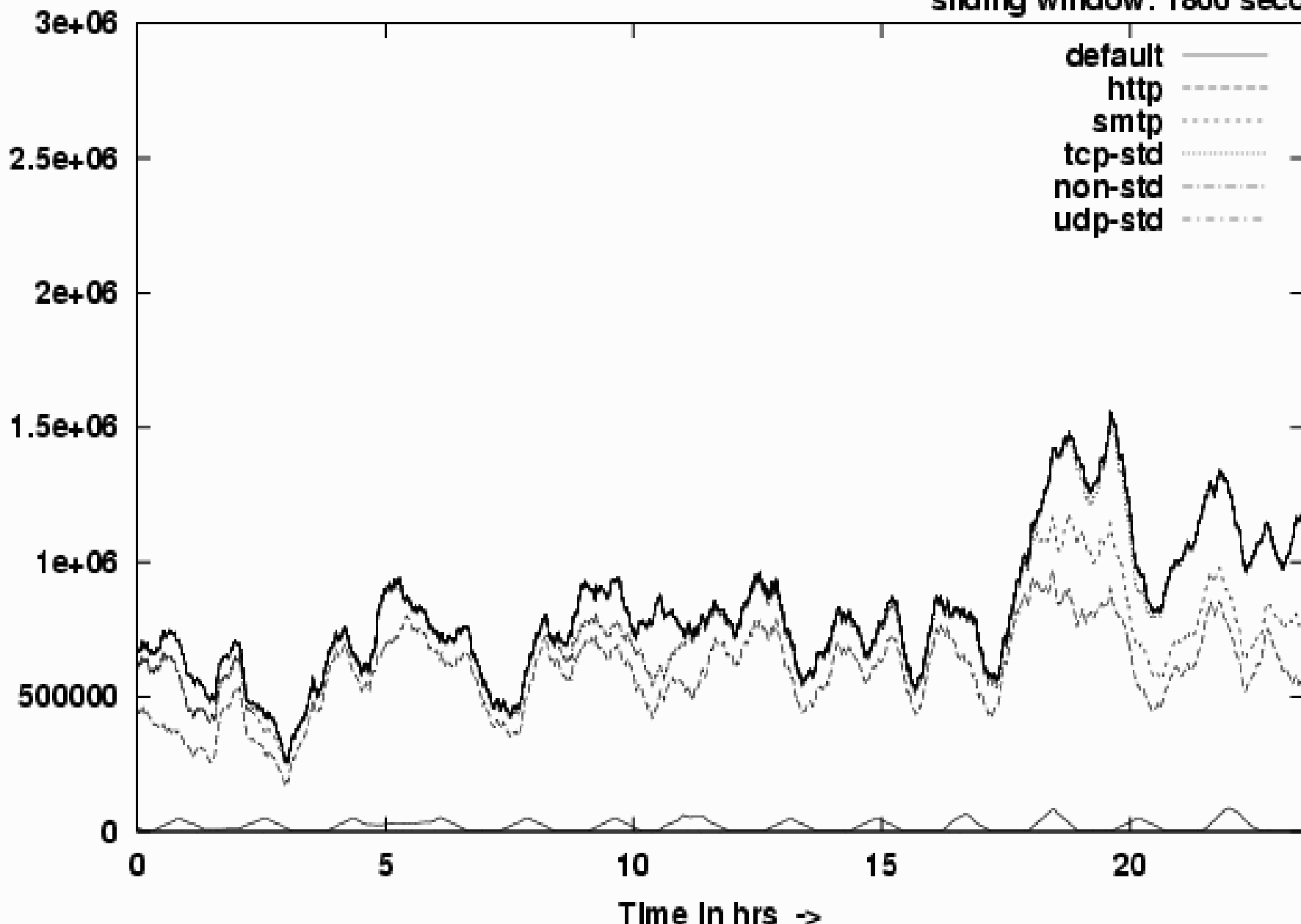
# Outbound Traffic From Ilsc-net

start: 20060820 00:00:00

stop : 20060820 23:59:00

sliding window: 1800 seconds

Service Wise Traffic Rate In bps -->



# Support: Who to call ?

- Problems with Internet Access
  - Your local systems administrator
  - Email to [nethelp@serc.iisc.ernet.in](mailto:nethelp@serc.iisc.ernet.in)
  - Call SERC, ask for nethelp and leave a message
- All other problems
  - Your local systems administrator

# Network Usage

- Usage within campus
  - Use FQDNs and not IP addresses
  - Report problems instantly
  - Keep your systems updated with anti-virus software
  - Should you feel that your system is very slow, report it
  - Have your system's configuration audited
- Access outside campus
  - DO NOT access objectionable content
  - DO NOT intrude into other networks/services



# Questions ?

# IISc Present Network Setup

